

ENGLISH**HFB 300****5. IMPORTANT MESSAGES AND FREQUENTLY ASKED QUESTIONS****1. Except handsets, what kind of devices can the handsfree communicate with:**

Besides pairing with a handset for receiving and making phone calls, the handsfree can also communicate with PDA and computer that equipped with Bluetooth. For example, when communicating with a computer (through a USB Dongle) users can chat and/or listen music over the Internet.

2. Red LED blinking:

Low battery indicator; please recharge your battery as soon as possible.

3. Can't power up the device after charging more than 20 minutes:

For the first time, the device should be charged at least 40 minute prior tuning on, It is recommended that the battery should be fully charged before using the device.

4. Without charging indicator:

When the battery runs off or the handsfree has not been used for a while, the Red LED may take a while to light up after the charger connected.

5. Can't hear anything on handsfree:

you should check the followings

- Handsfree is power on
- Handsfree has paired with a handset
- Handsfree should connected with a handset (except the handset only supports Handsfree Profile)
- Handsfree and handset are within 10m
- Handsfree and handset should have good single strength

6. How many devices can a handsfree pair with:

Handsfree can pair with up to 8 devices, please refer section 2.4.2 for details.

7. Handsfree can not be found when a handset tries to pair with it:

Your handsfree may not be in the pairing mode, please refer section 2.4.1 for details.

8. Do the paired handsfree or the paired handset need to be repaired power off:

No. Please note that for the handset supports handsfree profile, the handsfree and the handset must be connected first. Refer section 2.4.4 for details.

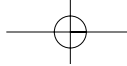
9. Voice dialing does not work:

First check the handset supports voice dialing function; make sure you have recorded the voice tag. Please note that noisy environment will affect voice dialing.

10. Can't realize any functions:

In the course of using, sometimes the Handsfree cannot work properly by some wrong operations. At this time, connect the charger to the power outlet; plug the mini USB connector of the charger to handsfree's charging port to start charging for a few seconds. Then release the charger from the handsfree and the power outlet, and turn on the handsfree to restart.





ENGLISH



Declaration:

Without written permission from original manufacturer, reproduction, transfer, distribution or storage of part or all of the contents in this document in any form is prohibited.

The company reserves rights to make any changes and improvements to the product described in this document without prior notice.

Notice:

Please make sure your mobile phone supports Bluetooth profiles and network operator supports the functions described in this manual, otherwise the relative functions cannot be realized on this Handsfree device.

Safety:

- Use the charger that comes with package.
- Check the laws and regulations on the use of mobile phones and handsfree equipment in the areas where you drive. Always give full attention to driving and pull off the road and park before making or answering a call if driving conditions require.
- Do not allow children to play with your Bluetooth Handsfree Speaker since it contains small parts that could become detached and create a choking hazard.
- This device contains a Li-polymer battery. Please keep it away from fire anytime (including discarding the device) or the battery may explode.
- The Handsfree Speaker, especially the embedded battery must be properly disposed or may be recycled, contacts your local recycling centers for disposal methods.

Certification and Safety Approvals

This product has been tested and found to comply with Bluetooth BQB requirements, part 15 of FCC rules, R&TTE Directive (99/5/EC) or CE marked requirements.

Warning: Users should not make changes or modify the device in any way. Changes or modifications without expressly approved by the party responsible for compliance could void the user's authority to operate the device.

This device complies with part 15 of the FCC Rules. Operation is subject to the following two conditions: (1) This device may not cause harmful interference, and (2) this device must accept any interference received, including interference that may cause undesired operation.

FEDERAL COMMUNICATIONS COMMISSION INTERFERENCE STATEMENT

This equipment has been tested and found to comply with the limits for a Class B digital device, pursuant to part 15 of the FCC Rules. These limits are designed to provide reasonable protection against harmful interference in a residential installation. This equipment generates, uses and can radiate radio frequency energy and, if not installed and used in accordance with the instructions, may cause harmful interference to radio communications. However, there is no guarantee that interference will not occur in a particular installation. If this equipment does cause harmful interference to radio or television reception, which can be determined by turning the equipment off and on, the user is encouraged to try to correct the interference by one or more of the following measures:

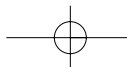
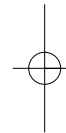
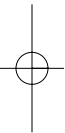
- Reorient or relocate the receiving antenna.
- Increase the separation between the equipment and receiver.
- Connect the equipment into an outlet on a circuit different from that to which the receiver is connected.
- Consult the dealer or an experienced radio/TV technician for help.

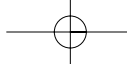
CAUTION:

Any changes or modifications not expressly approved by the grantee of this device could void the user's authority to operate the equipment.

RF exposure warning:

The equipment complies with FCC RF exposure limits set forth for an uncontrolled environment. The equipment must not be co-located or operating in conjunction with any other antenna or transmitter.





ENGLISH



Contents:

1. INTRODUCTION	4
1.1 Bluetooth technology	4
1.2 Bluetooth handsfree system	4
1.3 Product features	4
1.4 Package content	5
1.5 Overview	5
1.6 Definitions on key press duration	5
2. USING YOUR HANDSFREE	6
2.1 Battery charging and usage	6
2.1.1 Battery charging	6
2.1.2 Battery information	6
2.2 Mounting your handsfree	7
2.3 Turn ON/OFF handsfree turn	8
2.4 Pairing / Connecting your handsfree with bluetooth equipment	8
2.4.1 Pairing your Handsfree with Bluetooth handset	8
2.4.2 Pairing your Handsfree with Other Bluetooth Equipment	8
2.4.3 Erase all Paired Records	9
2.4.4 Connecting/Disconnecting your Handsfree with Bluetooth Equipment	9
2.5 Call functions	9
2.5.1 Call	9
2.5.2 Adjusting handsfree volume	10
2.5.3 Mute	10
2.5.4 Transferring calls to/from your handset	10
2.5.5 Voice dialing	10
2.5.6 Advanced call functions	10
2.6 Connecting your handsfree with USB dongle	11
3. Quick user guide	13
3.1 Led patterns	13
3.2 Quick user guide	13
4. Maintenance	16
5. Important messages and frequently asked questions	17

1. INTRODUCTION

1.1 Bluetooth Technology

Bluetooth is an internationally standardized technology supporting short distance wireless communications. Any two Bluetooth-compatible equipments, such as mobile phone, PDA, PC, headset, mouse, keyboards, printer, etc. can wirelessly communicate with each other via Bluetooth connection. To ensure worldwide compatibility, Bluetooth operates on the globally available ISM (Industrial Scientific and Medical) frequency band. Within 2.4 GHz and 2.48 GHz, Bluetooth transmits data up to either 10 meters (CLASS II mode) or 100 meters (CLASS I mode) using 79 frequency hopping channels.

Though line-of-sight is not required, Bluetooth connections could be subject to interferences from obstructions such as walls, human bodies, and other electronic devices. In addition, due to variations on product implementation, it is likely that Bluetooth equipments from different manufactures have interoperability issues. In that case, you may consult with manufactures to check product compatibility.

Note that, there could be some restrictions imposing on using Bluetooth devices in some countries. Please check with your local authorities.

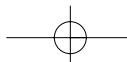
1.2 Bluetooth Handsfree System

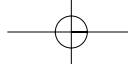
This Bluetooth handsfree system is a specially designed product allowing car drivers to make and receive calls without holding a mobile phone. It provides a clean wireless audio connection with your Bluetooth mobile phone and PDA. The product can also be used in the office or home, besides of vehicle environment.

In addition to vehicle environment applications, this portable equipment, supported by an internal rechargeable Li-ion battery, can also be used in office environment as normal handsfree equipment to make/receive phone calls without bothering holding the mobile handset. It can also be placed beside a Bluetooth-enabled PC to make voice calls over the Internet.

1.3 Product Features

- Bluetooth v1.2 compliant, interference-tolerable with WLAN devices
- Class II, operation range up to 10 meters
- Best-in-class voice quality ensured by cutting-edge noise suppression and echo cancellation techniques
- Voice dialing and user friendly operation keys ideal for car drivers to make/receive calls
- Supports call waiting/conference functions
- Voice security ensured by using 128-bit encryption
- Better portability with internal rechargeable Li-ion battery
- Talk/standby time up to 5.5/500 for HFB 300 hours with internal battery
- Easy-to-mount with stylish mounting dock, Sun-visor Clip, hang-strip, and Double-side Sticker
- Robust performance, fast connection, accurate and sensible search of devices in range
- Stylish, portable, lightweight, mini-sized, suitable for vehicle and office environment





ENGLISH



1.4 Package Content

- HFB 300
- Mounting dock (Optional)
- Double-Side Sticker
- Sun-visor Clip (Optional)
- 12/24V Car Charger (or Traveling Charger, Optional)
- User Manual

1.5 Overview



- 1. Speaker**
- 2. Red/Blue LED:** for indicating device status
- 3. Button K1:** for turning on/off device
- 4. Button K2:** for receive/end call
- 5. Button K3:** for adjusting speaker volume up
- 6. Button K4:** for adjusting speaker volume down
- 7. Microphone:** for picking up your voice
- 8. Charging Port:** for connecting to the travel (or car) charger to charge the battery of device

1.6 Definitions on Key Press Duration

- Short press (SP): press and release a button quickly.
- Long press (LP): press and hold a button for at least 3 seconds, then release.
- Very long press (VP): press and hold a button for at least 6 seconds, then release.

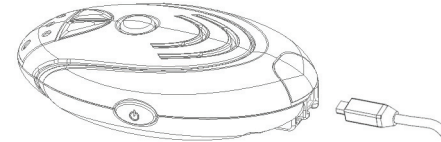
2. USING YOUR HANDSFREE

2.1 Battery Charging and Usage

2.1.1 Battery Charging

This device contains a rechargeable Li-Polymer battery. First-time charging time is about 4 hours. Later-on recharging time is around 2-3 hours. Detailed charging procedures as follows:

1. Connect the car charger to the cigarette lighter.
2. Plug the USB Cable in PC.
3. Referring to Figure 2, plug the connector of the charger to handsfree's charging port to start charging. Both the Red and Blue LEDs will be on during charging. Once the Red LED turns off, the battery is fully charged and you should disconnect the charger from the handsfree and the power outlet.



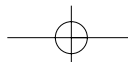
Note:

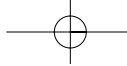
1. It is recommended to charge your device when it is not in use.
2. Please note that "inserting" charger will cause a device reset. When the device is in charging (the charger has been inserted), the device is in normal operation.
3. During a call, the existing connection between the device and the mobile phone will be reset after "inserting" the charger. The call will be transferred back to the mobile phone momentarily. The device will try to re-establish the connection automatically. Sometimes, the user needs to short-push K2 to reconnect the device.

2.1.2 Battery Information

1. Once fully charged, the battery for HFB 300 supports continuous talk time up to 5.5 hours and standby time about 500 hours.
2. When the battery is low, the device beeps once every 20 seconds and the Blue and Red LEDs alternate every 3 seconds, charge the battery as described above.

Note that, over-charging will reduce battery life. If a fully charged battery is left unused, it will lose power over time. Extreme temperature (either too hot or too cold) will also affect its ability to charge, capacity, and lifetime.





ENGLISH

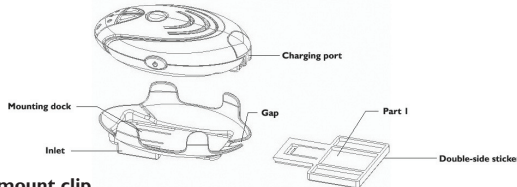


2.2 Mounting your Handsfree

It is easy to mount on the dashboard of the car with mounting dock and double-side sticker, or use Sun-visor Clip to fix the Handsfree device on the sun-visor over driver's seat. It can be more flexible to use the Handsfree in the car or carry out to the office and home

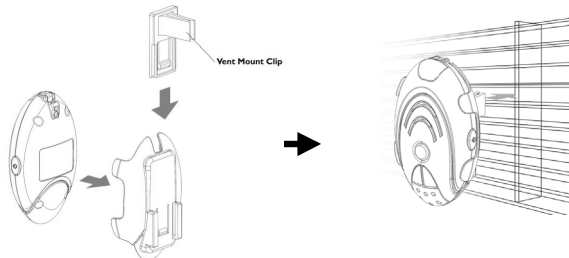
Fixing the mounting dock

Plug the part I to the inlet, then tear the paper off the Double-side Sticker, paste the mounting dock on the right place on the vehicle. Put the device in the mounting dock. Note that, the charging port that is on the device and the gap that is on the mounting dock must be at the same direction.



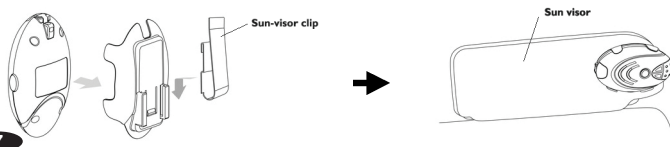
Fixing the vent mount clip

If using the Vent Mount Clip, insert the clip in the vent in the car. Note that, the microphone of the Handsfree can't aim at the vent to avoid noise in talking mode.



Fixing the sun-visor

Fix the mounting dock and the Sun-visor Clip, and then clip to the sun visor in your vehicle. Note that, the microphone of the Handsfree must aim at the sound bearing.



2.3 Turn On/Off Handsfree

Turn on the Handsfree: Long press K1, you will hear 2 power-up tones, Blue LED gives 3 quick blinks then Blue LED gives 1 blink per 3 seconds; Red LED is off. This indicates the handsfree is power on.

Turn off the Handsfree: Long press K1, you will hear 2 power-down tones, Red LED will blink 3 times then all LEDs are off. This indicates the handsfree is power off.

2.4 Pairing/Connecting your Handsfree with Bluetooth Equipment

2.4.1 Pairing your Handsfree with Bluetooth handset

Before making and answering calls, you must pair your handsfree and phone. Pairing sets up a unique relationship between your handsfree and your handset. The handset will memorize the handsfree's unique ID (or passkey). This ensures that a unique and encrypted wireless link between your handsfree and handset will be used during calls.

Detailed operation procedures are as follows:

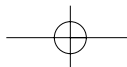
1. Place your handsfree close to your Bluetooth handset, and ensure your handsfree is power off, your handset is power on
2. Press and hold K1 for at least 6 seconds until the Blue and Red LEDs alternate continuously. You will hear 2 power-up tones and a pairing tone to indicate that the handsfree has successfully entered the pairing mode
3. Following your phone user guide to active Bluetooth device search on the phone side, on your phone screen you will see a list of Bluetooth equipment found by the phone at the end of the searching process.
4. Select this Bluetooth Handsfree from the list (for HFB 300 the sign is 'BTHF202') and initiate pairing following handset's on-screen prompts.
5. Continue to follow on-screen prompts to enter passkey "0000" and confirm to pair the handsfree with your handset. Once the pairing procedure is completed, you will hear a connecting tone, and then Blue LED gives 3 quick blinks per 2 seconds. It indicates that the handsfree device and the handset are paired and connected.

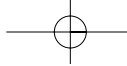
Note:

1. If pairing is successful, handsfree's Red LED is off. The Blue LED gives 3 quick blinks per 2 seconds. If pairing is failed, the Blue and Red LEDs alternate continuously (for about 2 minutes). You need to go back to above steps 3-5 to repeat the pairing process.
2. Your handsfree will remain in the pairing mode for about 2 minutes. If pairing cannot be finished within 2 minutes, the handsfree will enter into the standby mode (without Bluetooth connection in this case). You need to repeat the above steps 2-5 to restart the pairing process.

2.4.2 Pairing your Handsfree with Other Bluetooth Equipment

In addition to Bluetooth phone, your handsfree can also pair with other Bluetooth equipment for realizing short distance wireless communications.





ENGLISH



Similar pairing procedures described in the previous Section can be used. You can follow the user guide of the Bluetooth equipment to complete pairing operations on the equipment side. This handsfree can be paired with up to 8 Bluetooth equipments (including mobile handsets). The corresponding 8 sets of pairing information are recorded by the handsfree. Each paired equipment can be wirelessly communicated with the handsfree after setting up a Bluetooth connection. Please check Section 2.4.4 on procedures to set up a Bluetooth connection.

2.4.3 Erase all Paired Records

This handsfree can be paired with up to 8 Bluetooth equipments. When Handsfree is in the Pairing Mode, long press K4, it will erase all paired profiles and quit pairing mode. At this time, Blue LED gives 1 blink per 3 seconds.

2.4.4 Connecting/Disconnecting your Handsfree with Bluetooth Equipment

When the handsfree communicates with a Bluetooth equipment with Handsfree Profile, the Bluetooth connection between two equipments shall be established in advance. If two Bluetooth equipments have been paired recently, you can simply reconnect them.

Connecting your Handsfree with Bluetooth Handset:

Initiating a request from either the handsfree or the handset can set up Bluetooth connection. The detailed operations are as follows:

1. Initiating connection request from the Handsfree: Place the handsfree close to the Bluetooth handset and then short press K2.
2. Initiating connection request from the Bluetooth handset: Place the handsfree close to the Bluetooth handset and then follow the handset user guide to find the handsfree and send connection request.

After connecting, you will hear a connecting tone, and then Blue LED gives 3 quick blinks per 2 seconds.

Disconnecting your Handsfree with Bluetooth Handset:

When handsfree connected with Bluetooth handset, you can disconnect them as follows:

1. Long press K2.
2. Refer to handset's manual to initiate the connection from the handset side.
After disconnecting, you will hear a disconnecting tone, and then Blue LED gives 1 blink per 3 seconds.

2.5 Call Functions

2.5.1 Call

Before dialing, both your handsfree and handset must be power on. And you also need to ensure your handsfree and handset has been linked with Bluetooth connection.

Answer Call: Short press K2.

Reject Call: Long press K4.

End Call: Short press K2.

Redial: Long press K3.

The Blue LED gives 3 quick blinks per 2 seconds and the Red LED is off.

2.5.2 Adjusting Handsfree Volume

In the talking mode, you can short press K3/K4 to increase/decrease your speaker volume, and the Blue LED gives 3 quick blinks per 2 seconds. You can repeat the above operation to speaker volume to a desirable level.

Note: For most Bluetooth headset, handsfree volume control will synchronize with the handset. That is, your handsfree volume can also be controlled your handset, vice versa. However, this may not be always true due to variations on handset implementations chosen by different manufactures.

2.5.3 Mute

You can mute or un-mute an ongoing call by simultaneously quick pressing K3 and K4. The Blue LED gives 3 quick blinks per 2 seconds and the Red LED is off.

2.5.4 Transferring Calls to/from your Handset

Transferring calls to your handset: long press K2, Blue LED gives 1 blink per 3 seconds; Red LED is off.

Transferring calls from your handset: short press K2, and Blue LED gives 3 quick blinks per 2 seconds.

2.5.5 Voice Dialing

If your mobile phone supports voice dialing, you can make a call via voice dialing from your Handsfree:

Voice Dialing: Long press K4; you will hear key tone and Blue LED gives 3 quick blinks per 2 seconds, then follow your handset user guide to complete voice dialing.

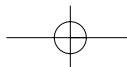
Cancel Voice Dialing: Short press K4. The Blue LED gives 3 quick blinks per 2 seconds and the Red LED is off.

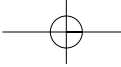
2.5.6 Advanced Call Functions

If your mobile phone has call waiting/conference functions, this Bluetooth Handsfree can support the function by following operations:

1. A new call comes in, While you are in talk:
 - 1) Long press K3, to hold active call and accept incoming call.
 - 2) Short press K2, to end active call and answer new call.
2. When two calls in progress, one is active and the other is on hold:
 - 1) Long press K3, to toggle hold call and active call.
 - 2) Short press K2, to end active call and accept hold call.
 - 3) Long press K4, to make conference.

The Blue LED gives 3 quick blinks per 2 seconds and the Red LED is off.





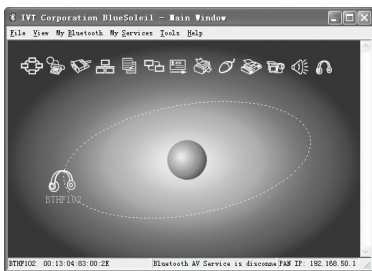
ENGLISH 

2.6 Connecting your Handsfree with USB Dongle

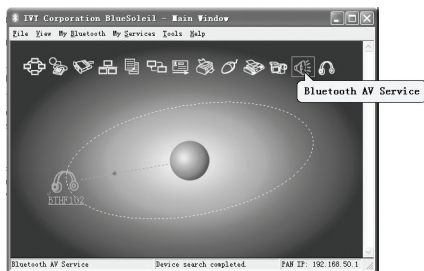
Before pairing and connecting, you must ensure the USB Dongle has already connect with PC, and IVT BlueSoleil driver has been installed in PC.

Detailed operation procedures are as follows:

1. Press and hold K1 for at least 6 seconds until the Blue and Red LEDs alternate continuously. You will hear 2 power up tones, 2 more power up tones to indicate that the Handsfree has successfully entered the pairing mode.
2. Start "IVT BlueSoleil". Click "My Bluetooth™>Bluetooth Device Discovery" on main menu, to search the Bluetooth device in range.
3. In the result of search, right click "BTHF202", and choose "Pair Device".

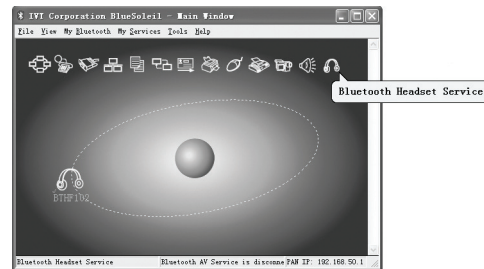


4. Enter passkey '0000' and confirm to pair the Handsfree with your computer.
5. After paired, a red "✓" will be there before "BTHF202". IVT and Handsfree will connect "Bluetooth AV Service" automatically.

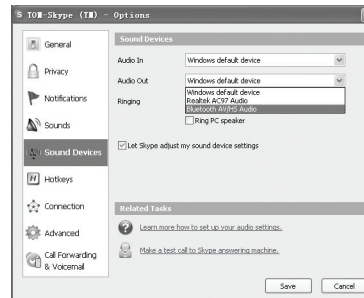


6. After connected, Start "Windows Media Player" and configure the speaker interface to be "Bluetooth AV/HS Audio".

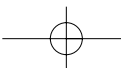
7. Restart "Windows Media Player" and you can listen to the music with Handsfree.
8. If you want to chat via Online Messenger or VoIP software, you must disconnect "Bluetooth AV Service", and connect "Bluetooth Headset Service". Right click "BTHF202", and choose "Disconnect>Bluetooth AV Service".
9. After disconnected, right click "BTHF202", and choose "Connect ->Bluetooth Headset Service".

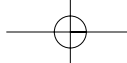


10. When connecting, there are some indicative tones from Handsfree, short press K2 to receive the connection.
11. After connected, start your Skype and configure the audio interface to be "Bluetooth AV/HS Audio". Then you can chat via Online Messenger or VoIP software.



If the driver you used is not IVT BlueSoleil such as the software that comes with package, please referring to the user guide.





ENGLISH



3. QUICK USER GUIDE

3.1 LED patterns

- LED Pattern 1: Blue LED gives 1 blink per 3 seconds; Red LED is off.
- LED Pattern 2: Blue LED gives 3 quick blinks per 2 seconds; Red LED is off.
- LED Pattern 3: Blue and Red LEDs alternate continuously.
- LED Pattern 4: Blue and Red LEDs alternate every 3 seconds.
- LED Pattern 5: All LEDs are off.

3.2 Quick User Guide

You can follow the instructions listed in Table 1-6 below to operate your handsfree devices. (Please refer section 1.5 and 1.6 for details of key and key press duration definitions.)

Note: your handsfree devices can only talk to paired Bluetooth handsets. For handsets supporting HFP only, you also need to establish Bluetooth connection between your handsfree and your phone before making and answering calls.

Table 1: Power on/off

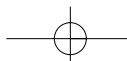
FUNCTION	CURRENT STATUS		OPERATION	HANDSFREE INDICATOR	
	HANDSET	HF		AUDIO TONE	LED INDICATOR
Turn On		Power Off	Long press K1	2 power-up tones	LED Pattern 1
Turn Off		Standby	Long press K1	2 power-down tones	LED Pattern 5

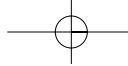
Table 2: Pairing/Connections

FUNCTION	CURRENT STATUS		OPERATION	HANDSFREE INDICATOR	
	HANDSET	HF		AUDIO TONE	LED INDICATOR
Enter pairing mode		Power Off	Very long press K1	2 power-up tones and then 1 pairing tone	LED Pattern 3
Erase all paired profiles		Pairing Mode	Long press K4		LED Pattern 1
Pair handsfree with handset	Power on	Pairing Mode	Follows your handset user guide to complete pairing procedure. Passkey is "0000"	1 connecting tone	LED Pattern 2
Connect (handsfree with handset)	Standby (disconnected)	Standby (disconnected)	Short press K2 or setup connection from the handset	1 connecting tone	LED Pattern 2
Disconnect	Standby (connect)	Standby (connect)	Long press K2 or refer to handset's manual to initiate the connection from the handset side		LED Pattern 1

Table 3: Call Functions

FUNCTION	CURRENT STATUS		OPERATION	HANDSFREE INDICATOR	
	HANDSET	HF		AUDIO TONE	LED INDICATOR
Answer Call	Standby	Standby	Short press K2		LED Pattern 2
Reject Call	Standby	Standby	Long press K4		LED Pattern 2
End Call	Talk	Talk	Short press K2		LED Pattern 2
Redial	Standby	Standby	Long press K3	Key Tone	LED Pattern 2
Voice Dialing	Standby	Standby	Long press K4	Key Tone	LED Pattern 2
Cancel Voice Dialing	Voice Dialing	Voice Dialing	Short press K4	Key Tone	LED Pattern 2
Volume Up	Talk	Talk	Short press K3		LED Pattern 2
Volume Down	Talk	Talk	Short press K4		LED Pattern 2
Mute	Talk	Talk	Press K4 and K3 together	Key Tone	LED Pattern 2
Unmute	Talk	Mute	Press K4 and K3 together	Key Tone	LED Pattern 2





ENGLISH



Table 4: Transfer Functions

FUNCTION	CURRENT STATUS		OPERATION	HANDSFREE INDICATOR	
	HANDSET	HF		AUDIO TONE	LED INDICATOR
Call transfer (handsfree to handset)	Talk	Talk	Long press K2	Key tone	LED Pattern 1
Call transfer (handset to handsfree)	Talk	Talk	Long press K2	Key tone	LED Pattern 2

Table 5: Low Power Indication

FUNCTION	CURRENT STATUS		OPERATION	HANDSFREE INDICATOR	
	HANDSET	HF		AUDIOTONE	LED INDICATOR
Low power warning		Except power off		Beep every 20 seconds	LED Pattern 4

Table 6: Advanced Call Functions

FUNCTION	CURRENT STATUS		OPERATION	HANDSFREE INDICATOR	
	HANDSET	HF		AUDIO TONE	LED INDICATOR
Held active call and accept incoming call	Talk	Call Waiting	Long press K3		LED Pattern 2
End active call and answer new call	Talk	Call Waiting	Short press K2		LED Pattern 2
Toggle held call and active call	Talk	Call on hold	Long press K3		LED Pattern 2
End active call and accept hold call	Talk	Call on hold	Short press K2		LED Pattern 2
Conference	Talk	Call on hold	Long press K4		LED Pattern 2

4. MAINTENANCE

HFB 300 is well-designed communications devices, careful maintenance and proper use will extend the product life and keep their elite performance in delivering voice. Following maintenance procedures may be helpful to you.

- Always turn off power and keep your device in a safe place when it is not in use
- Keep the device dry, away from water, precipitation, humidity, moisture, and various liquids that may corrode electronic circuits. If your device gets wet, turn it off immediately and wait until the device gets dry completely before using it
- Keep the device away from dusty and dirty places. Otherwise, the mechanic and electronic parts could be damaged
- Do not store the device in high temperatures (above 30°C) or in direct sunlight. Extreme high temperature could degrade performance, reduce battery lifetime, and wrap or melt the certain plastics.
- Do not store the device in too cold place (under 5°C). Moisture could form inside the device when you take it to a warm place. This could damage the internal electronic circuits.
- Avoid dropping, knocking, and shaking the device. The mechanical parts and the internal electronic circuits could be broken.
- Avoid using harsh chemicals, cleaning solvents, and any other strong detergent to clean the device. You may use a clean and slightly damp cloth to clean the device
- Always take to device to the nearest authorized service facility for repairing if it is malfunctioning. Disassembling, modifying, and replacing components yourself could degrade product performance, cause damages, and terminate warranty

