

HFG411BT software update

V.20240128R03EN



Step-by-step instructions for installing new software.

This update adds the following functionality:

- Bluetooth reset. (Delete all previously paired phones from memory).
- TWS (True Wireless Stereo) Pairing between two HFG411BT speakers.

The following steps are described in sequence:

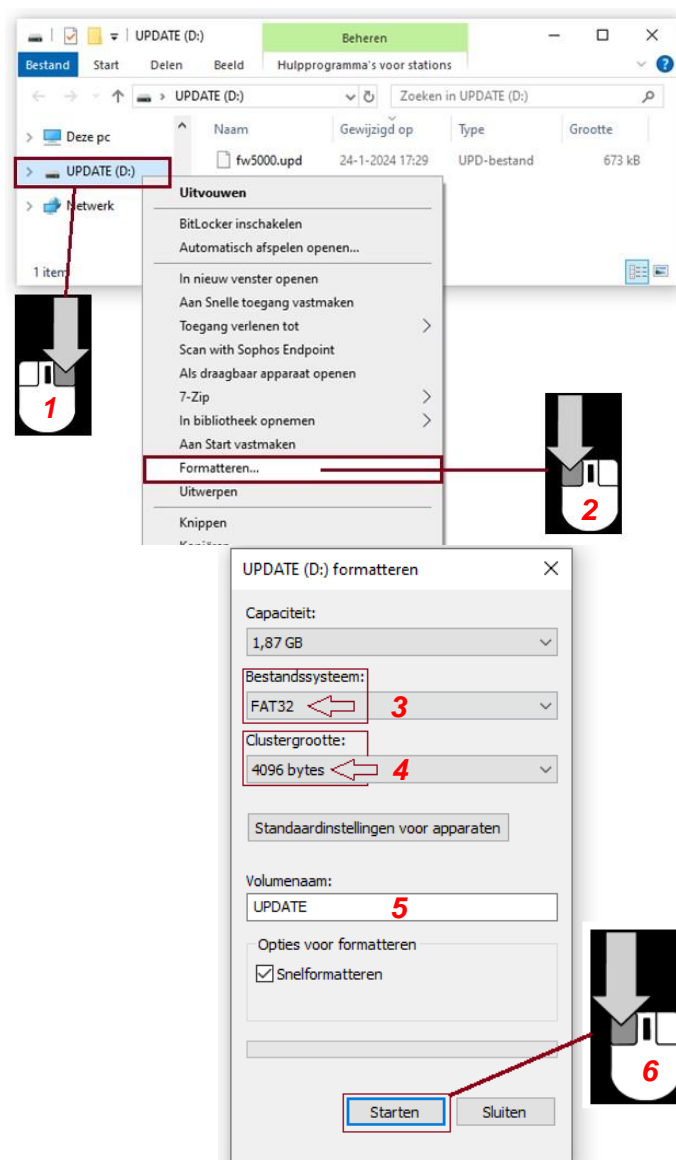
- [Prepare](#) USB stick for update.
- [Update](#) the software in the speaker.
- [Operation](#) added functionality.

Prepare USB stick for update.

- ❗ It is important to format the USB-Stick according to the settings below because otherwise the speaker may not recognize it!
- ❗ Storage capacity of the USB Update Stick should be 1GB to 32GB maximum
- ❗ Preparation of the USB Stick and software was tested on a Windows 10 operating system.

Preparing a USB Stick to load the software into the speaker.

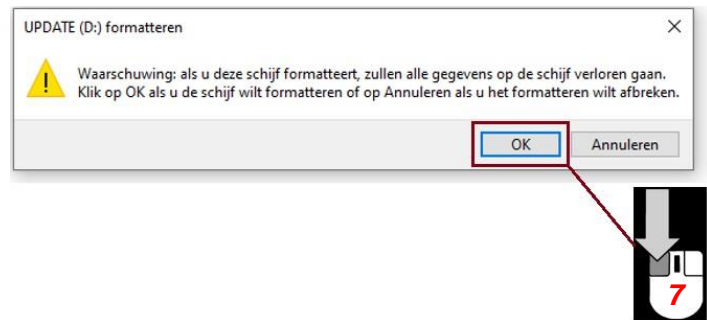
1. Connect the USB Drive to the computer and select the USB Drive in Explorer.
2. Then click the right mouse button and choose 'Format'



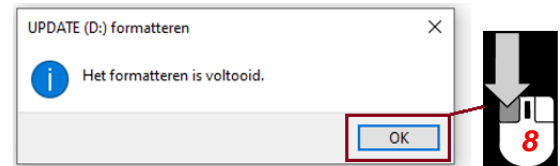
A new window as shown here opens

3. Make sure the USB is formatted to the 'FAT32' file system.
4. Cluster size should be set to 4096 bytes.
5. Volume name can be filled in as desired.
6. Confirm the settings by clicking 'Start'.

7. Confirm again to start formatting.



8. Formatting will now start and as soon as it is finished show this message. Close this message by clicking 'OK'.



The USB Stick is now ready to copy the update software to it.

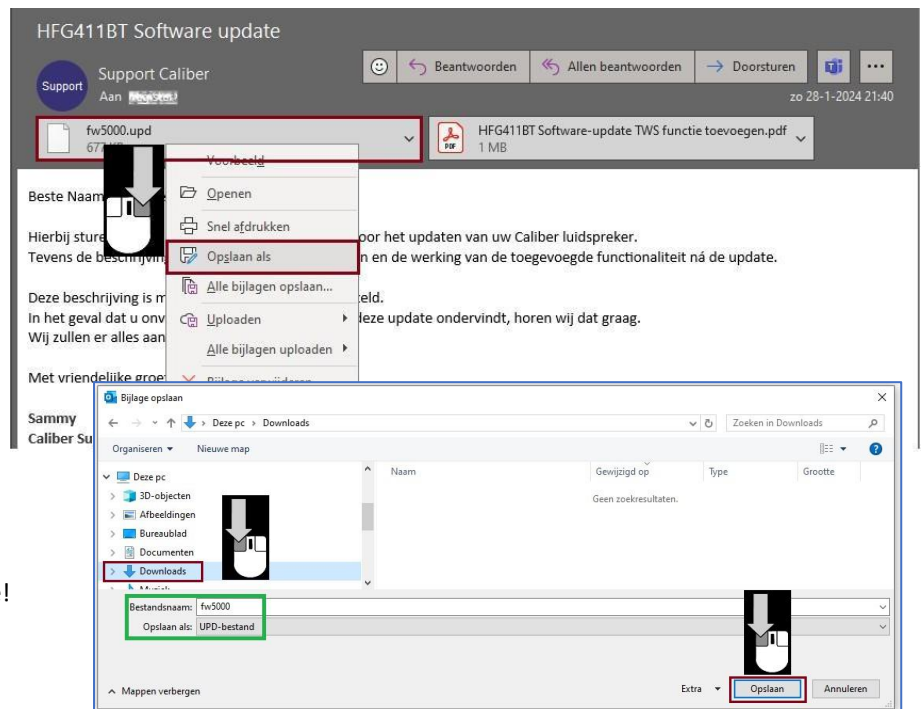
→ If the file is already saved on the computer, the following steps can be skipped.

[In this case, go directly to point 24.](#)

Preparation: Saving the update file from the e-mail to the computer

9. Open the e-mail and right-click on the file.

10. Then choose "Save As".



A new window will open.

11. Specify the location where to save the file.

12. Save the file.

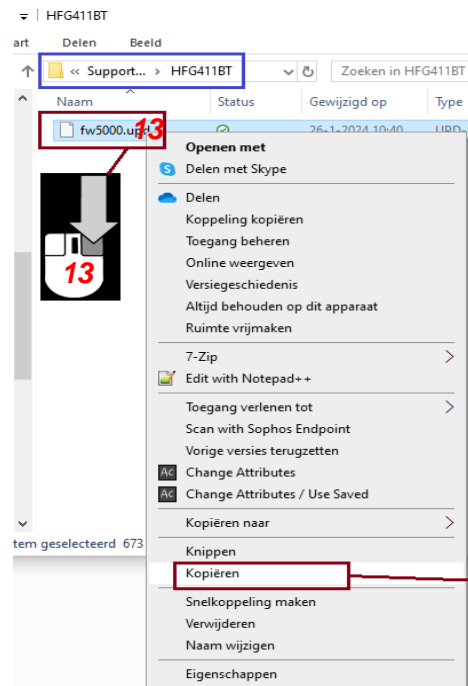
⚠ Do NOT change the file name!

Copy the update file to the USB Stick.

Go to the location on the computer where the update file 'fw5000.upd' is stored. Do not change the name or extension!

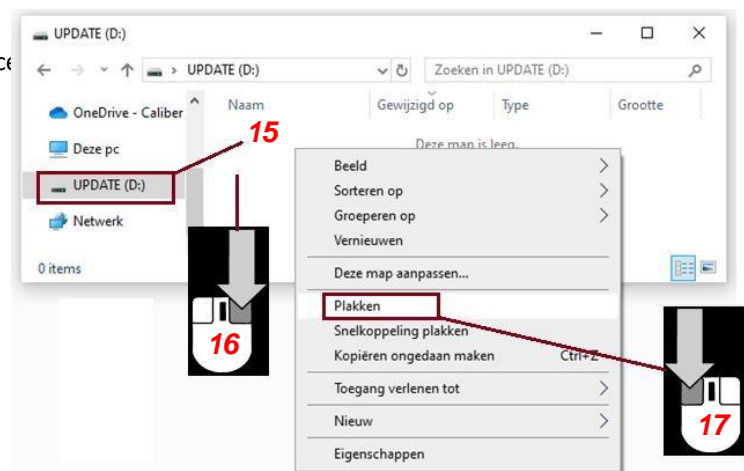
❗ The file location in this example is fictitious.

13. Select the file and click the right mouse button.
14. Then select "Copy".



15. Now select the USB Drive in the explorer.
16. Click the right mouse button in the empty space.
17. Choose "Paste".

The file will now be copied to the USB Stick.



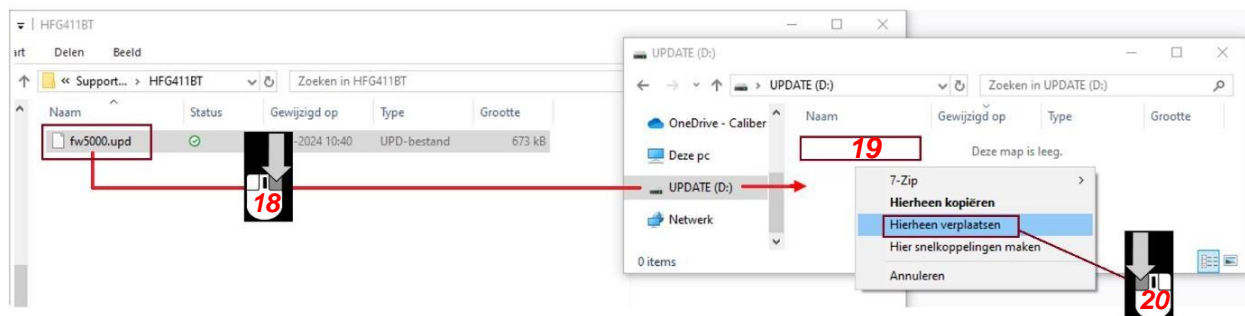
If copying the file to the USB Stick was successful, [continue to point 24](#)

An alternative way is to drag and drop the update file directly from, for example, an [e-mail](#) or [file location](#) on the computer and copy or move it to the USB Drive*.

*From email, only copying is available.

Drag file from saved location on computer

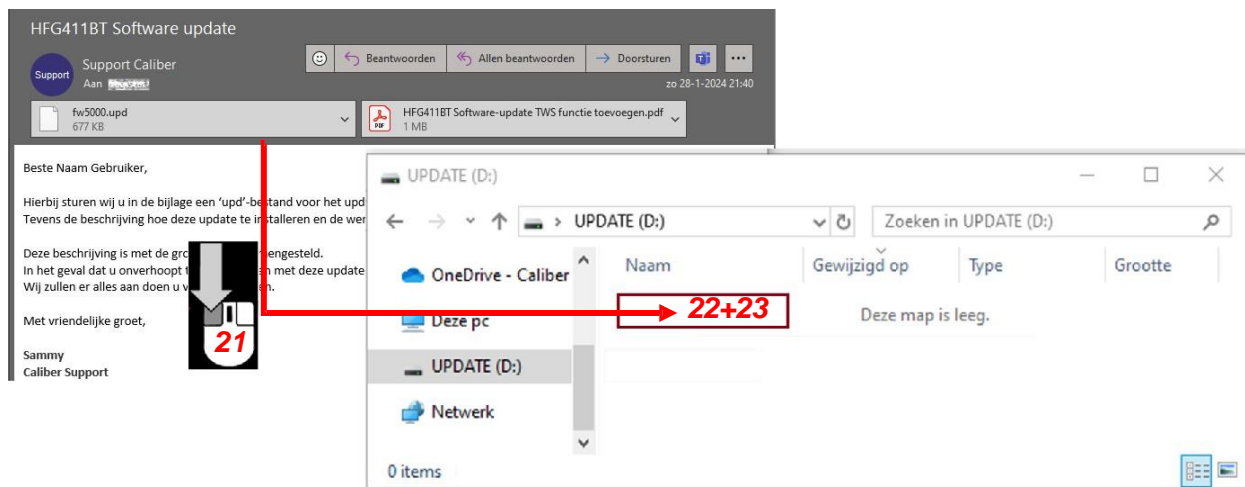
18. In this case, drag the update file to the USB Stick while the right mouse button is pressed.
19. Release the mouse button when it is in the empty compartment of the USB Stick.
20. Then choose "Copy Here" or "Move Here".



[Go to item 24.](#)

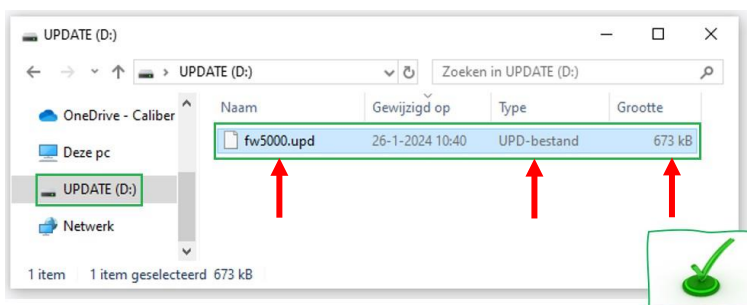
File drag and drop from received email

21. While the left mouse button is pressed, drag the update file from the e-mail to the USB Stick.
22. Release the mouse button when it is in the empty compartment of the USB Stick.
23. The file will now be copied to the USB Stick.



If copying or moving is completed, the contents of the USB Drive should be the same.

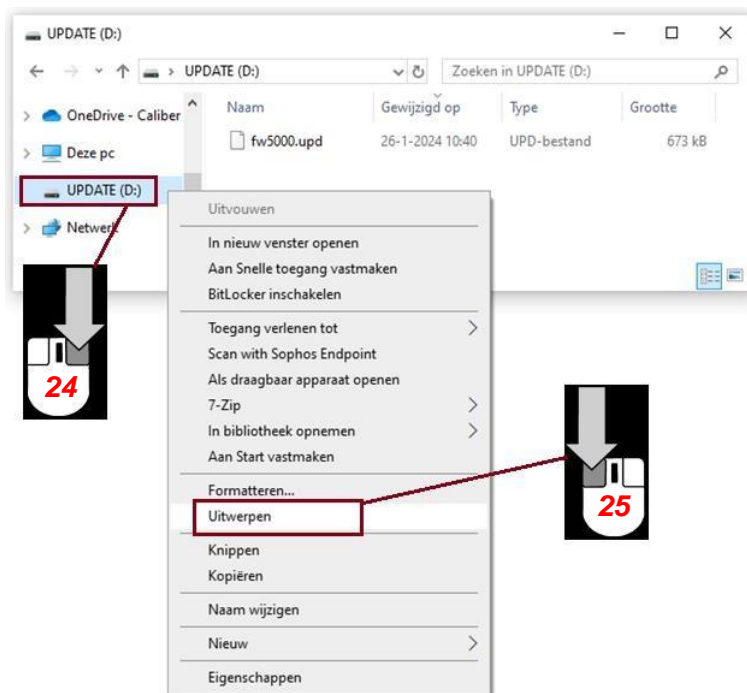
⚠ **Do not include any other files on the USB Stick! This can affect the update and disrupt and damage the speaker.**



24. We are now ready to start updating the speaker.

⚠ Despite being a common use, which normally does not cause problems, **do NOT use** the USB Stick directly from the USB Port.

Instead, right-click on the USB Drive in Explorer.

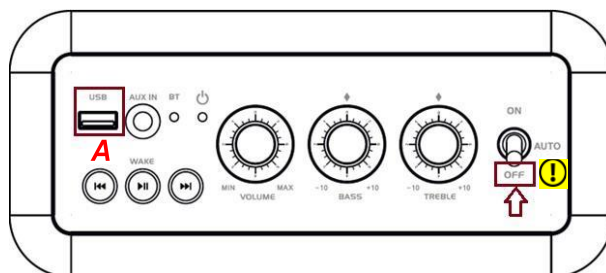


25. Select 'Eject' here
The USB Flash Drive will immediately disappear from Explorer, after which it can be safely removed.

Loading software update into the speaker.

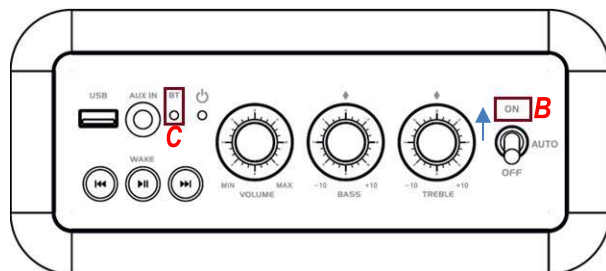
⚠ Make sure the speaker is **OFF**!

- A. Insert the USB Stick into the USB input on the speaker.
It is located on the top left of the control panel that sits at the top of the speaker.



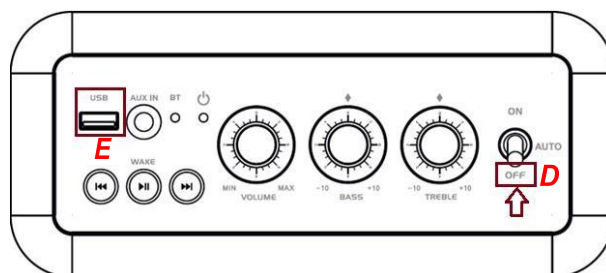
- B. Turn on the speaker.

- C. The software will now load.
After about 5 to 10 seconds, a signal tone will be heard, after which the (blue) Bluetooth® status light will go out for a while.



- D. The update is now loaded. Turn the speaker OFF.

- E. Remove the USB Drive.

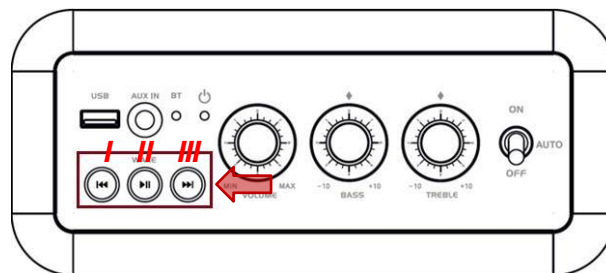


→ Repeat steps A through E for the second speaker

The speakers are now ready for use.

Operation added functionality.

AFTER the update, the speaker has additional functionality.
Below are the instructions on how to operate it.
All other functions are the same as described in the original manual provided.



I 'Previous' Button:

- a. Short press: Go back one track in the playlist.
Multiple numbers back = short press repeatedly.
- b. Long press: In USB mode: Fast rewind.
In Bluetooth mode: Activate TWS Function (Pairing Two Speakers)
Read [below](#) how to use this function.

II 'Play/Pause' button:

- a. Short press: Pause music playback / Resume music playback
In Standby: Activate / Wake up from standby mode

III 'Next' Button:

- a. Short press: Forward one track in the playlist.
Forward several numbers = short press repeatedly.
- b. Long press: In USB mode: Fast forward.
In Bluetooth mode: Delete all paired devices.
A reconnection will be required to stream music.

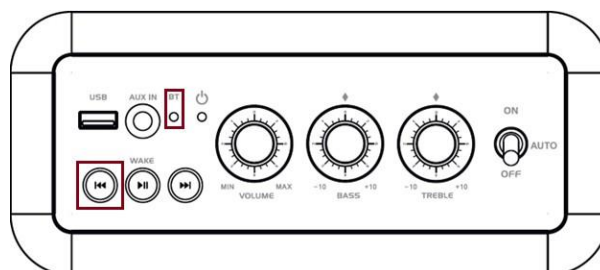
Using TWS Function.

Step 1:


Pair your device (Phone/Tablet/Computer...) with one of the speakers. You can then play music.

Step 2:


Turn on the second speaker. It will automatically start searching for a paired device. The blue Bluetooth® indicator light will flash slowly. Make sure any paired devices are not connecting, for example, by turning Bluetooth® off.



Step 3:

Press the  'Previous' button of the second speaker for 2~3 seconds.

The blue Bluetooth® (BT) indicator light on the second speaker will flash rapidly to indicate that TWS mode has been activated. The speaker will now start searching for the same speaker to pair with.

Then press the  'Previous' button of the already paired speaker for 2~3 seconds.


Once the speakers have connected, a confirmation tone will sound and the blue Bluetooth® (BT) indicator light on the second speaker will illuminate continuously.

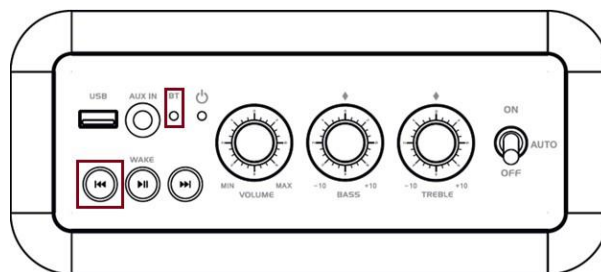
→ The speakers are now paired and play the same music, with the two speakers together forming a stereo set. (One speaker now plays the right channel while the other speaker plays the left channel)

→ The TWS function does not work in USB mode.


(In USB mode, the Bluetooth® function of the speaker on which USB files are played is disabled)

TWS Function Disable.

Press the  'Previous' button on the second speaker for 2~3 seconds. The speaker will disconnect and the blue Bluetooth® (BT) indicator light on the second speaker will flash slowly again to indicate that the speaker is back in connection/pairing mode.



TWS Function Reconnect.

Press the  'Previous' button of the second speaker for 2~3 seconds. The speaker will reconnect to the previously paired speaker and the blue Bluetooth® (BT) indicator light will illuminate continuously.

Additional information:

Tip: Set the volume of the paired device to 80% of maximum volume and set equalizers to neutral. For streaming apps such as Spotify, for example, make sure the sound quality is set to "very high. This way, the speaker's potential comes out the most.

❗ DO NOT forget to delete the update file from the USB Drive before it will be used for anything else. Caliber Europe B.V. is not liable for any damage or injury caused by improper use of this file.

Bluetooth®

Bluetooth® has an average maximum range of about 10 meters*.

Make sure both speakers also stay within this range to maintain a constant connection.

*Can be affected by environmental factors

